

Christchurch Schools' Music Festival Representative Choirs

Audition Advice

You will probably feel a bit nervous when you enter the audition room. The good news is that everyone else is likely to have the same feelings as you! Try to relax. The audition process is not as bad as you think and we will be working hard to make it a positive experience for you and we will help you to sing to the best of your ability.



The conductor of the Senior Representative Choir will audition each of the Year 7 and 8 children who want to audition for the Senior Choir, and the conductor of the Junior Representative Choir will audition each of the Year 5 and 6 children for the Junior Choir. Each conductor may have a tutor or assistant with them in the audition to help them accompany you as you audition or take notes. The 'About Us' – 'Music Team' section of our website will tell you who the conductors are: <https://musicfestival.school.nz/about-us/our-team/>

We will be auditioning 300-400 of the best Year 5-8 singers and will be selecting 150-200 students as Senior and Junior Representative Choir members.

If you have been in the one of the Representative Choirs in previous years, you will not necessarily be assured of a place this year. This is because the audition process must be fair to all those auditioning.

The format for the audition will be the same for everyone entering the room - each person auditioning will be expected to sing *God Defend New Zealand*, sing some scales to test your vocal range and tone, and complete a number of ear tests to test your aural skills. The conductors will use a rubric to assess your abilities against a common set of criteria. See the next section below for details of the audition process, and a copy of the assessment rubric.



Each audition will take approximately three minutes and the results of the auditions will be emailed to you and to your school approximately 3-4 weeks after you have auditioned. See the 'Representative Group Information' section of the Music Festival's website for the exact date.

The Audition Process

1. You will sing one complete verse of *God Defend New Zealand* in either Te Reo or English and you will be accompanied by the piano. It is best if you know the words off by heart when you come to the audition, however the music and lyrics will be provided to you if you would like to use them. The last two bars of the music will be played as the introduction. A copy of the sheet music for *God Defend New Zealand* is provided below, in the key of G Major.

You may have heard the New Zealand National Anthem sung by a soloist at a special occasion or event, or by a singer on a recording online, in a contemporary or pop style. For your audition, you should sing *God Defend New Zealand* exactly as it is written without any vocal embellishments. This is so that we can ensure that your singing will be able to match with the other voices in the choir when there are 100s of children singing the National Anthem together.

You will be marked on **Intonation (Song)**, **Tone (Song)**, and your **Performance Quality**, as per the rubric below.

2. You will be asked to sing up or down a simple scale which the conductor will teach you in the audition. The intention is to determine your vocal range (how high or low you can sing), and the quality of your voice across your vocal range which will determine your mark for **Tone (Scales)** on the rubric.
3. You will then be played a short tune (a 2 to 4 bar melody) on the piano. The conductor will play the tune twice and then ask you to sing the tune back on "La". This is for the **Memory Test** as per the rubric. See below for some examples of the sort of tune that will be used for the memory test.

Tip: the 2nd time the tune is played to you, try and hum along to help lock it into your memory. As soon as the conductor finishes playing it for the 2nd time, sing it back straight away so that it doesn't vanish from your memory.

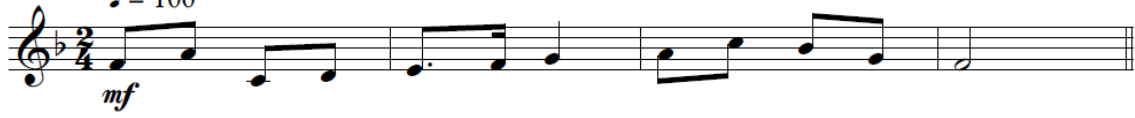
4. You will be played five single notes on the piano and asked to sing each back on "La". See **Pitch Recall** on the rubric.
5. The conductor will then play three notes together as a chord (a major triad) on the piano and then ask you to sing the top, middle, and bottom notes of the chord to "La". You can hum the three notes of the chord starting from bottom to top, top to bottom, and then sing "La" when you reach the notes (top, middle, bottom) that the conductor is asking you to sing back. See **Triad Pitch Recall** on the rubric.

Memory Examples

Copyright © Withington 2002

Senior Choir

♩ = 100



Senior Choir

♩ = 100



Junior Choir

♩ = 100



Junior Choir

♩ = 100



Marking Rubric

We will use the following rubric to evaluate your audition:

Intonation (Song)	10 marks	9 marks	8 marks	7-5 marks	4-3 marks	2-0 marks
<p><i>These marks will be awarded when you sing the National Anthem</i></p>	<p>Perfect: Pitch, vowel placement, and diction</p>	<p>Excellent (almost perfect): Pitch, vowel placement, and diction</p>	<p>Reliable: Pitch, vowel placement, and diction</p>	<p>Acceptable: Pitch, vowel placement, and diction</p>	<p>Uncertain: Pitch, vowel placement, and diction</p>	<p>Inaccurate: Pitch, vowel placement, and diction</p>
	<p><i>Pitch, vowel placement, and diction are all important factors for singing with good intonation (singing in-tune). Good vowel placement means you are singing with tall vowels (North – South) as opposed to spread vowels (East – West). Good diction means that the text (lyrics/words) is clear and can be understood.</i></p>					
Tone (Song)	5 marks	4 marks	3 marks	2 marks	1 mark	0 marks
<p><i>These marks will also be determined when you sing the National Anthem</i></p>	<p>Full Voice Sings with a full, resonate singing voice across entire range</p>	<p>Mostly Head Voice Sings with mostly the head voice.</p>	<p>Distinct Breaks Sings with distinct breaks between the head and chest voice.</p>	<p>Mostly Chest Voice Sings with mostly the chest voice however there is evidence of the head voice.</p>	<p>Chest Voice Sings with the chest voice. There is no evidence of the head voice.</p>	<p>Speaking Voice Sings with the speaking voice. No singing voice is evident.</p>
Tone (Scale)	5 marks	4 marks	3 marks	2 marks	1 mark	0 marks
<p><i>These marks will be based on your vocal quality while singing scales</i></p>	<p>Full Voice Sings with a full, resonant singing voice across entire range.</p>	<p>Mostly Head Voice Sings mostly with the head voice.</p>	<p>Distinct Breaks Sings with distinct breaks between the head and chest voice.</p>	<p>Mostly Chest Voice Sings with mostly the chest voice however there is evidence of the head voice.</p>	<p>Chest Voice Sings with the chest voice. There is no evidence of the head voice.</p>	<p>Speaking Voice Sings with the speaking voice. No singing voice is evident.</p>
Performance Quality			3 marks	2 marks	1 mark	0 marks
<p><i>Determined by your confidence and quality of performance</i></p>			<p>Strong, confident singer</p>	<p>Mostly confident, has potential</p>	<p>Insecure, shy singer</p>	<p>Very insecure</p>
Ear Tests				1 mark for each note	.5 mark for each note	0 marks
<p><i>Marks will be awarded when the audtioneer sings back five single notes played on the piano by the auditioner. Marks will also be awarded for each note sung from three separate triads played on the piano by the auditorer (total possible 8 marks)</i></p>				<p>Assured Accurate response - the correct pitch is sung.</p>	<p>Tentative Fairly accurate - the pitch is slightly flat or sharp.</p>	<p>Inaccurate The wrong pitch is sung.</p>
Memory			3 marks	2 marks	1 mark	0 marks
<p><i>The auditionee will sing back, to "La", a short tune played to them on the piano twice by the auditioner</i></p>			<p>Excellent Notes & rhythms are practically perfect.</p>	<p>Secure Notes & rhythms are almost always accurate.</p>	<p>Insecure Notes & rhythms are sometimes accurate.</p>	<p>Uncertain Notes & rhythms are seldom accurate.</p>

If you are auditioning for the **Junior Choir**, this score indicates the accompaniment that will be played while you sing.

The New Zealand National Anthem

From The New Zealand Gazette

$\text{♩} = 108$

music by John Woods; words by Thomas Bracken

Voice *f*

E I - ho - wā A - tu - a, O ngā i - wi mā - tou - rā
God of na - tions at Thy feet, In the bonds of love we meet.

Piano *f*

Ā - ta wha - ka - ro - ngo - na; Me a - ro - ha no - a
Hear our voi - ces we en - treat, God de - fend our free - land.

Ki - a hu - a ko te pai; Ki - a tau tō a - ta - whai;
Guard Pa - ci - fic's tri - ple star, From the shafts of strife and war.

Ma - na - a - ki ti - a mai, A - o - te - a - ro - a.
Make her prai - ses heard a far, God de - fend New Zea - land.

ff

8^{vb}



If you are auditioning for the **Senior Choir**, this score indicates the accompaniment that will be played while you sing.
 This is the arrangement of *God Defend New Zealand* that is used in the Festival.

God Defend New Zealand

music by John Woods; words by Thomas Bracken
 accompaniment arranged by Richard Oswin

$\text{♩} = 90$
mf

Voice

E I - ho - wā A - tu - a, O ngā i - wi mā - tou rā
 God of na - tions at Thy feet, In the bonds of love we meet.

Piano

mf

G D7 Em7 D7/F G D7/F Em G/B C G Am/C A7/C# D A/E D7/F#

Ā - ta wha - ka - ro - ngo - na; Me a - ro - ha no - a
 Hear our voi - ces we en - treat, God de - fend our free - land.

G G/B C B/D# Em D7/F# G G G/B C Am G/D D7 G(sus4) G

Ki - a hu - a ko te pai; Ki - a tau tō a - ta - whai;
 Guard Pa - ci - fic's tri - ple star, From the shafts of strife and war.

G G/B C Em D D7 G/B C E7/B Am E7/B Am/C A7/C# D G D/A A7/G D D7

Ma - na - a - ki - ti - a mai A - o - te - a - ro - a.
 Make her prai - ses heard a far, God de - fend New Zea - land.

G G7/F C/E D#° G/D A/C# D7/C G/B C G/D C/E G/D D7 G